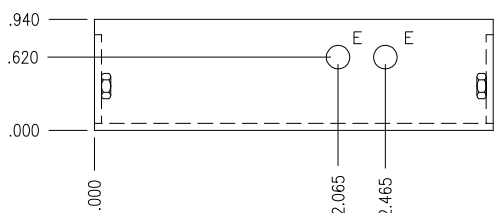
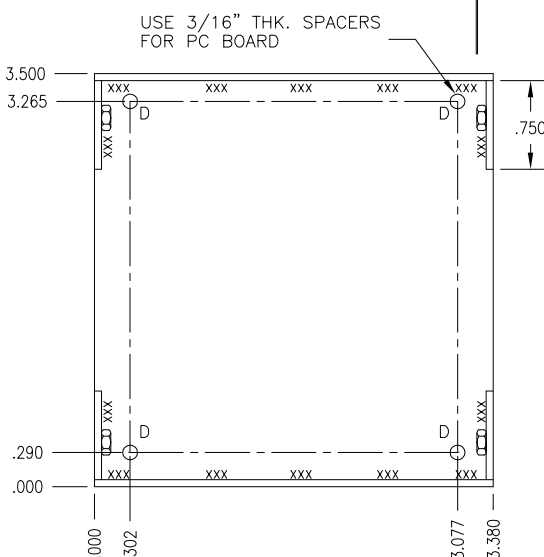
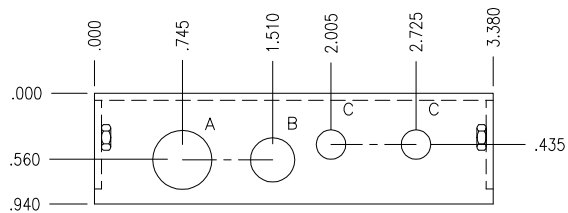


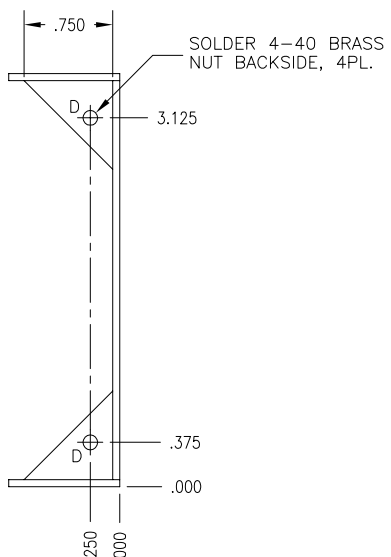
## Fabricated chassis from PCB material





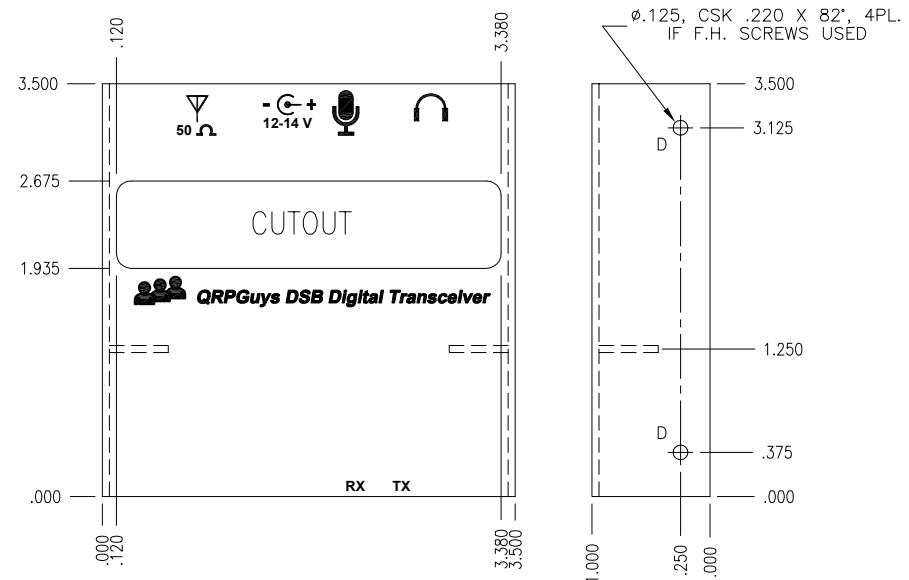
**CHASSIS BASE**

1PC. - 3.380 X 3.380  
 2PCS. - 3.380 X .940  
 4PCS. .750 X .750 CUT DIAGONALLY



**HOLE LEGEND**

- A -  $\phi$ .500
- B -  $\phi$ .375
- C -  $\phi$ .250
- D -  $\phi$ .125
- E -  $\phi$ .218



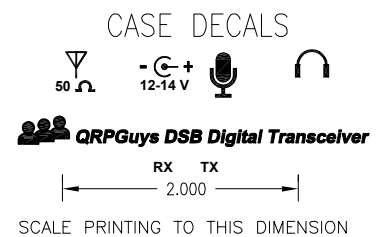
**CHASSIS COVER**

1PC. - 3.500 X 3.500  
 2PCS. - 3.500 X .940  
 2PCS. - .500 X .500 CUT DIAGONALLY

MATERIAL - 1/16" THK. DOUBLE SIDED FR4 PCB

USE CONSTRUCTION TECHNIQUES DETAILED IN:  
[https://qrpguys.com/wp-content/uploads/2016/11/pcb\\_chassis\\_a.pdf](https://qrpguys.com/wp-content/uploads/2016/11/pcb_chassis_a.pdf)

USE 3/16" LONG SPACERS TO MOUNT TRANSCEIVER PCB



<b>QRPGuys</b>			
TITLE PCB FABRICATED CHASSIS - DIGITAL TRANSCEIVER			
DRAWN	WA4MNT	SCALE	DATE
		FULL	09/16/19
SHEET	OF	REF.	DWG.#
			FT8-01