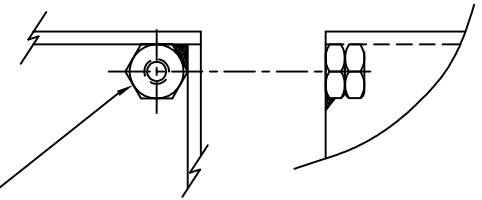
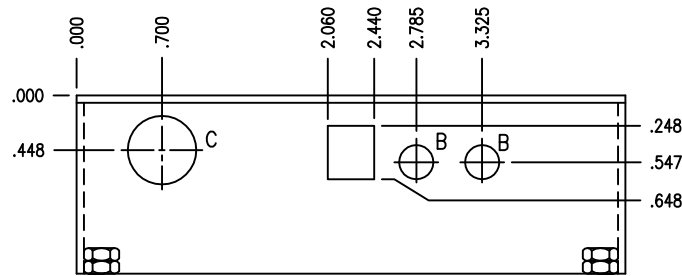
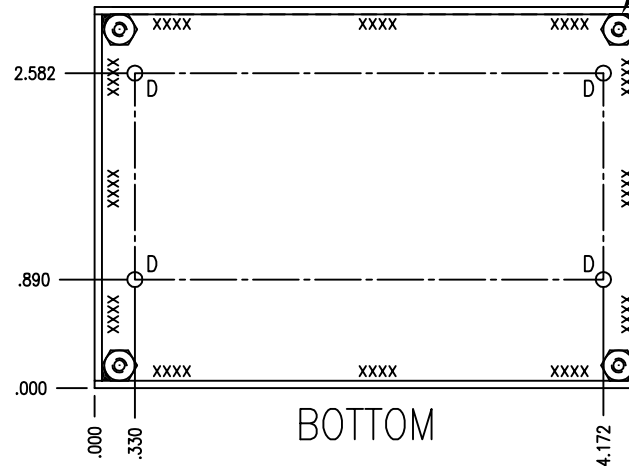
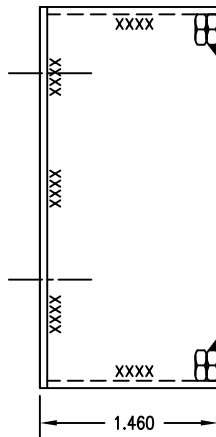


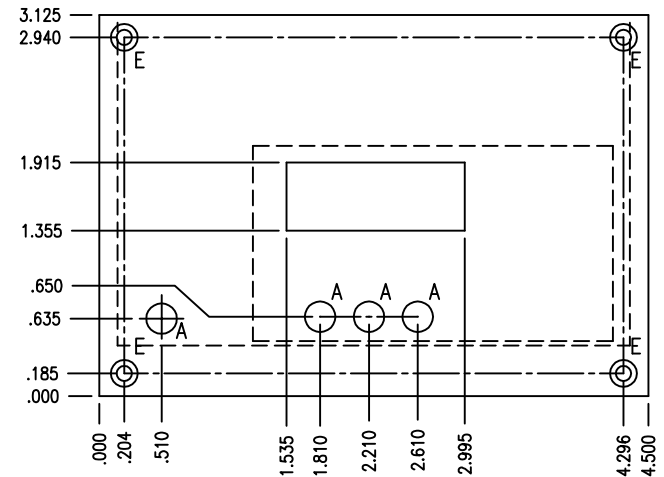
REVISIONS		
REV	DESCRIPTION	DATE



NOTE ORIENTATION OF NUT FLATS TO THE CORNER, OR THE COVER DIMENSIONS WILL NOT MATCH
SOLDER 2 BRASS NUTS EACH CORNER AS SHOWN, FLUSH WITH THE TOP EDGE



BOTTOM



COVER

PCB CHASSIS FABRICATION TECHNIQUES DETAILED IN MISC. FILES SECTION

HOLES:

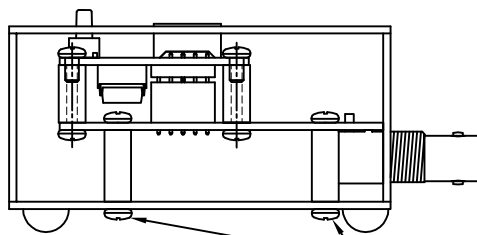
- A - ϕ .250
- B - ϕ .281
- C - ϕ .562
- D - ϕ .125
- E - ϕ .125, CSK ϕ .220 X 82°

MATERIAL - 1/16" THK. DOUBLE SIDE PCB MATERIAL

2 PCS. - 4.500" X 3.125" - TOP & BOTTOM

2 PCS. - 3.000" X 1.400" - SIDES

2 PCS. - 4.500" X 1.400" - FRONT & BACK



4EA. 3MM X 5MM L. SCREWS

USE 4EA. 4-40 X .38" L. F.H. COVER SCREWS
AND SELF ADHESIVE RUBBER FEET AS REQUIRED

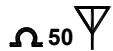
IT WILL BE NECESSARY TO EXTEND THE LENGTH OF THE KEYER FUNCTION BUTTON

UNLESS OTHERWISE SPECIFIED
DIMENSIONS ARE IN INCHES
TOLERANCES ARE:
FRACTIONS DECIMALS ANGLES
 $\pm 1/32$.XX \pm .020 $\pm 1^\circ$
.XXX \pm .010
SURFACE FINISH \sqrt
BREAK EDGES .005-.020
RADIUS OR CHAMFER

WWW.QRPGUYS.COM

TITLE PCB MATERIAL FABRICATED CHASSIS
FOR MULTI-DC TXCVR WITH OPT. VFO

DRAWN	WA4MNT	SCALE	FULL	DATE	02/21/21
SHEET	OF	REF.		DWG.#	



QRPGuys Multi-DC CW Transceiver

KEYER
FUNCTION

MENU

TUNE

DOWN

UP



QRPGuys Multi-DC CW Transceiver

KEYER
FUNCTION

MENU

TUNE

DOWN

UP

